

AirLight

Inflatable Light Tower Owner's Manual



PROJECTS

Product name: AirLight Inflatable Light Tower

Manufacturer: LTA Projects

Intended use: The AirLight Inflatable Light Tower is a portable area lighting device.

Technical Specifications

Height: 9 feet 9 inches

Weight: 27 pounds

Wattage: 336 Watts

Light output: 36,000 lumens

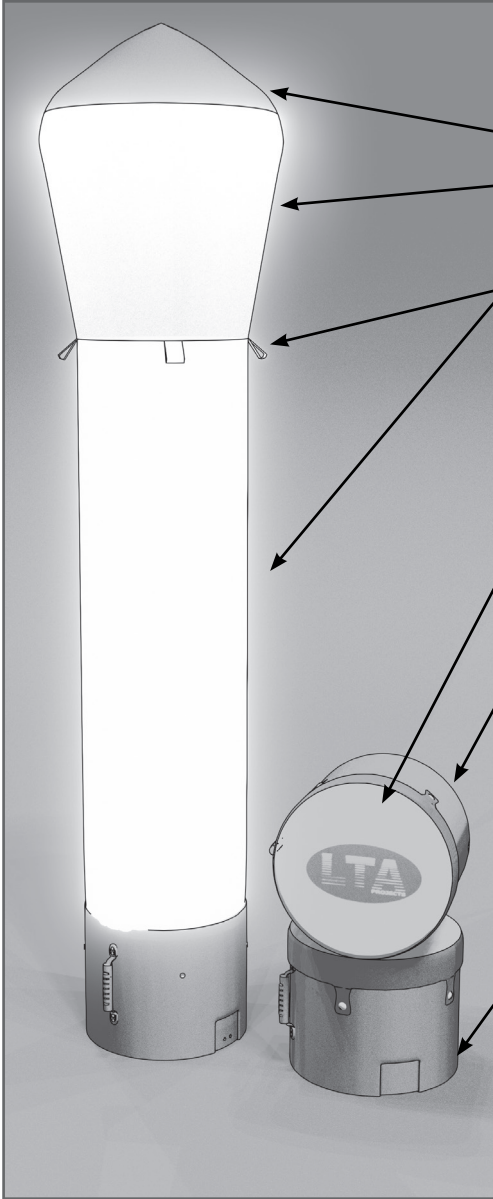
Voltage: 120V AC

Footprint: 20" x 20" x 15.5" tall

Table of Contents

Description of Components	2
Safety Warnings	3
Features	3
Operation Instructions	4
Troubleshooting	5
Maintenance	5
How to Change an AirLight Body	6
Warranty Information	7
Contact Details	7

Description of Components



Tower body

The tower body is made up of three main components: the white column, the frosted clear window, and rounded 360-degree reflector. These three components allow the AirLight to cast light in all directions which is both bright and easy on the eyes.

Top reflector

Frosted clear window

White column

Tower securing tie-down tabs

4 small webbing loops are positioned at intersection of the white and frosted clear components of the tower body. Using ropes, you can secure the tower with stakes or weight bags to increase its wind handling capabilities.

Quick-remove soft lid

The lid secures the tower body inside of the case when being transported. It connects to 4 snaps on the outside of the case.

Rugged outer case

The case is made from a durable plastic material. It protects the internal components and is the base from which the tower is deployed. The entire tower body can be fit into the case.

Power cord

Extending from inside the case, the power cord can be stuffed in the case with the tower body and extended to connect to your 120V power source.

Inflation / drain hole

At the base of the case, there is a small hole that allows air in and water out. Tip the case towards this hole if the tower has been operating in the rain.

Safety Warnings

- Power required (120V, 3.3 Amps max)
- Before inflating, inspect surroundings to ensure that the area around the case is clear and does not present any piercing or shock hazards
- Do not operate in severe weather
- Do not operate in standing water
- Ensure that inflation/drain hole at the base of the case is not submerged or blocked
- Unplug AirLight if the light is on but the tower body does not begin to inflate
- Unplug AirLight if the tower body does inflate but light is not on.
- The AirLight does not replace cones and should not be used in the flow of traffic

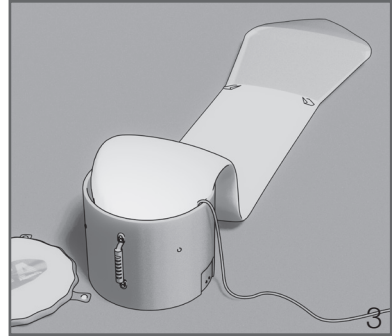
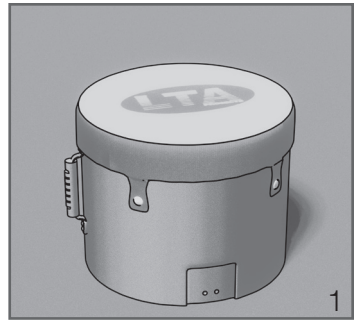
Features

- Unassisted inflation
- Weather-resistant design
- Comfortable grip handle
- Removable and washable tower body
- Soft, quick-remove lid
- Tower securing tie-down tabs
- Portable design

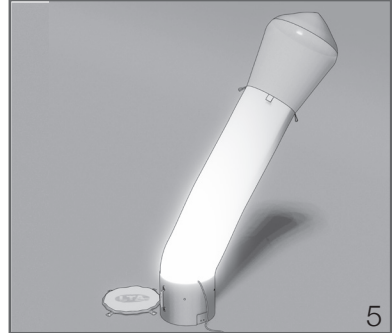
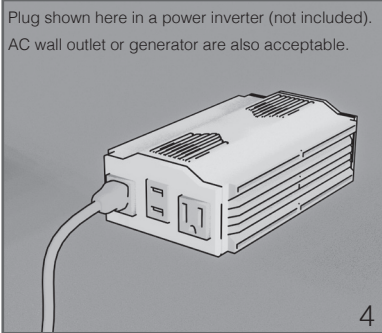
Operation Instructions

Review safety instructions on previous page before beginning

1. Place AirLight case on hard flat surface with at least 10 feet of clearance above base.
2. Remove soft lid and locate power cord
3. Grab the tower body and unfold the material, laying it out next to the case. Note: the bottom of the tower body is connected to the case.



4. Plug power cord into a grounded power source (120V, 3.3A)
5. Ensure that there are no obstacles that would hinder the tower erecting. Allow the tower to inflate.



6. The AirLight is now in operation and should be fully inflated and illuminated.
7. Secure the AirLight to the ground by connecting ropes to the tie-down tabs.



Troubleshooting

The light is on, but the tower body does not inflate.

- Listen for the blower, if it is not blowing, there is likely a wiring issue with your AirLight. Contact LTA Projects for further assistance or replacement.
- If the blower is making noise, unplug the AirLight.
- Inspect the tower body for holes.
- Inspect the bottom of the tower body. It should run all the way into the case and around a platform out of view.
- Pick up the case and shake lightly and listen for a rattling or loose parts.
- If any of these seem to be the issue, contact LTA Projects.

The tower body inflates, but the light does not turn on.

- Unplug the AirLight.
- There is likely a wiring issue with your AirLight, contact LTA Projects for further assistance or replacement.

Tower body is not vertical.

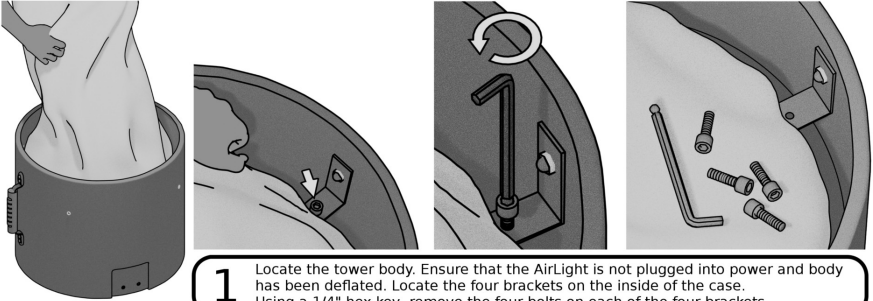
- Ensure that the case is placed on a secure flat surface.
- Ensure that there are no ropes or other hardware hindering the tower from inflating fully.
- Unplug the tower and inspect the area where the tower body connects to the case. Pulling the material out of the way, look around the edge of the case at the 4 L-brackets that connect the case to the platform and tower body. They should all be securely fastened.
- Inspect the 4 L-brackets. The lower part of the L-bracket should have a fastener that traps the bottom of the tower body. Ensure that none are missing.
- If any of these issues are present, contact LTA Projects.
- Starting at one point and working around the entire circle, put one hand on the case while the other hand grabs onto the material of the tower body near the base. Lightly tug material to try to reset bungee cord located under the platform. Repeat this on all four quadrants between the L-brackets until tower body is centered and secure.

Maintenance

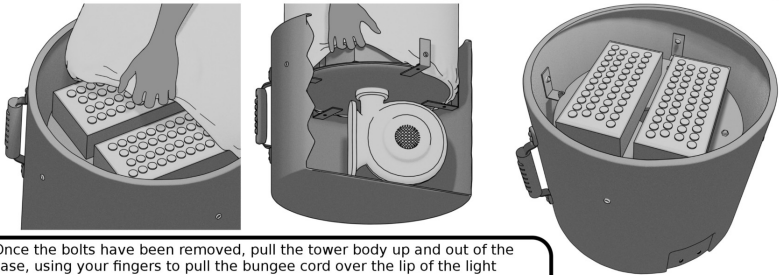
- The AirLight inflatable light tower is safe to operate in the rain. Before folding tower body back into the case, make sure it is dry to prevent mildew.
- Because it is so bright, the AirLight can attract bugs that land on the tower body. When you are finished using the tower, unplug the tower and allow it to deflate. Grabbing it by the top reflector, shake the tower body out to remove the bugs.
- If you want to clean the tower body, first try using a damp cloth and a mild detergent to wipe it clean. You can do this while the tower is inflated.
- If a more serious clean is desired, the tower body can be washed after removing it from the case. Do not use hot water. Tumble dry or air dry only.

How To Change An Airlight Body

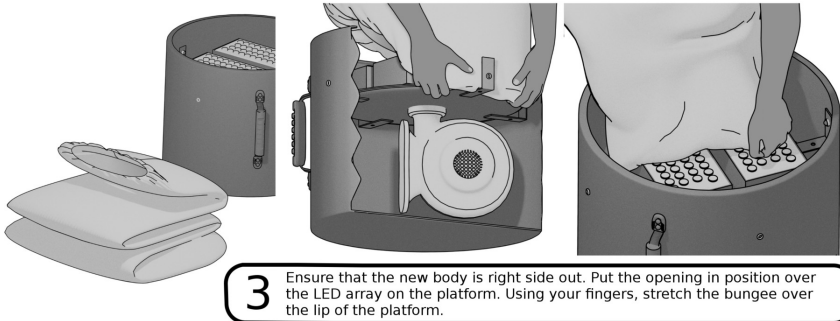
Instructions for removing and replacing the fabric body of LTA Projects' AirLight. These instructions can be used for replacing a body in need of repair or switching to one of our accessory bodies like the cone body.



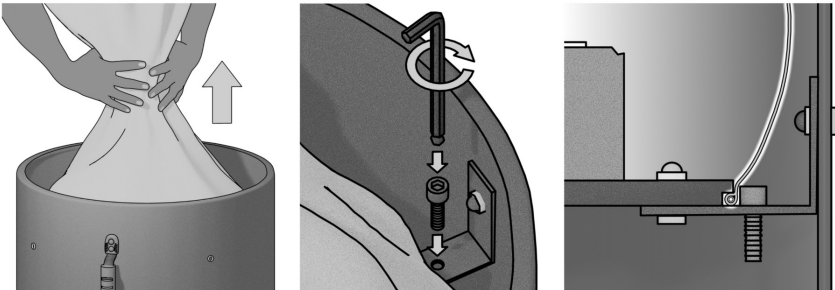
1 Locate the tower body. Ensure that the AirLight is not plugged into power and body has been deflated. Locate the four brackets on the inside of the case. Using a 1/4" hex key, remove the four bolts on each of the four brackets.



2 Once the bolts have been removed, pull the tower body up and out of the case, using your fingers to pull the bungee cord over the lip of the light platform. Once the tower has been removed, prepare the new body.



3 Ensure that the new body is right side out. Put the opening in position over the LED array on the platform. Using your fingers, stretch the bungee over the lip of the platform.



4 Pull the body up until the bungee sets into place against the ledge under the light platform. Repeat all the way around the circle. Replace the four bolts in the four brackets around the case. Pull the body with one hand up towards you to reveal the hole for the bolt. Using a 1/4" hex key, tighten each bolt. Fold the body into the case for transport.

Warranty Information

LTA Projects provides a limited warranty to U.S. purchasers that this new product will be free of defects or malfunctions that arise during normal use for a period of 90 days. LTA Projects will replace or repair any defective or malfunctioning genuine LTA Projects product at no charge with the exception of shipping cost to our factory in Tennessee. Replacement devices may be refurbished. The warranty does not cover products that were purchased used. LTA Projects' liability is limited to the amount of the purchase price. All other warranties, express or implied, including any statutory warranty or condition of merchantability or fitness for a particular purpose is disclaimed except to the extent prohibited by law.

Contact Details

LTA Projects
1605 Brown Avenue
Cookeville, Tennessee 38501
USA
877-897-5158
LTAProjects.com

AirLight Series

Four sizes of inflatable LED light towers make up the AirLight series. From our ultra-portable AirLight Flash to our incredibly powerful AirLight Pro Max, there is a light tower to meet your lighting needs.

